

Fortress Security Controller

250/500/1500 Mbps Models

FEATURES & BENEFITS

Simple and secure wired or wireless connectivity

Fortress Security Controllers provide a secure wired or wireless connection for your network. As an overlay, the Controllers can be plugged into any environment, regardless of topology, infrastructure vendor or wireless technology used.

Increase productivity

Fortress Security Controllers allow you to extend the availability of applications throughout your enterprise, without compromising security or manageability. Wireless networking allows for efficient use of the network, and Fortress Security Controllers ensure that policies can be enforced regardless of the method used to access the network.

Easy to deploy and manage

Because minimal configuration is required, Fortress Security Controllers offer true plug-and-play deployment. The browser-based management application affords convenient administration, and multiple Fortress Security Controllers can be centrally managed using Fortress Management and Policy Server (MaPS).

Use in any environment

The robust design and convenient form factor deliver dependable performance throughout your enterprise, making Fortress Security Controllers suitable for use in NOCs, front offices, retail space, warehouses or factory floors. Anywhere secure and manageable wireless networks are required, Fortress Security Controllers provide exceptional value.

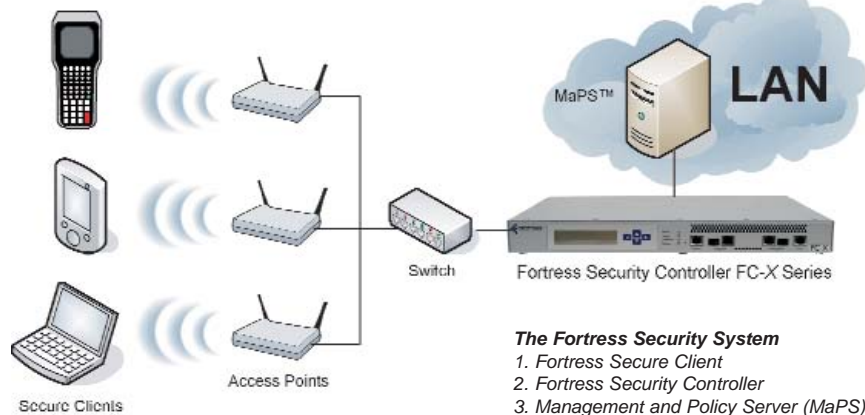
Protects data, network and devices

With a robust security infrastructure that encrypts at Layer 2, Fortress products eliminate the opportunity for hackers to intercept important network data, view internal network addresses, or interrupt availability through denial-of-service attacks.

Wireless networking and device mobility are essential components of today's local area networks. Organizations in almost every industry are currently realizing the business benefits associated with wireless networking for PCs, handhelds and specialized devices. Wireless networks require considerably less effort to implement, resulting in potential cost savings.

In today's environment, the flow of information is critical to keep businesses running smoothly. Dozens of internal systems are required to ensure the highest levels of operational efficiency. From the executive suite to the warehouse, IT systems maintained over WLANs are becoming an increasingly popular alternative, if not an outright requirement, in a network-centric environment.

The Fortress Security System



The Fortress Security System

1. Fortress Secure Client
2. Fortress Security Controller
3. Management and Policy Server (MaPS)

Providing Secure Wireless Networking

Now, wireless networks can be deployed with the security and management features demanded by competitive IT and stringent business requirements, resulting in greater productivity, mobility and lower total cost of ownership. With the traditional perimeters of data networks expanding and, in some cases, disappearing, today's networks require internal defenses as well as the traditional external defenses. Fortress's complete product offering secures every part of your network, from edge to core.

Whether protecting small pockets of WLAN users or an entire enterprise, Fortress has models suitable for your specific requirements. Fortress Security Controllers provide security between wireless devices, users and network infrastructure. All critical security operations - encryption, authentication, data integrity checking, key exchange, and data compression - are optimized to minimize hands-on management. It provides secure service for multiple access points simultaneously and scales for various architectures.

Fortress Technologies provides a comprehensive, robust wireless solution that is easy to implement and maintain. By securing the device, data and network, Fortress is the strongest commercially available security platform for wireless networks.

FC SERIES

Fortress Security Controllers are an integral part of the Fortress Security System

Fortress Secure Wireless Access Bridges

Fortress Secure Wireless Access Bridges are all-in-one network access devices with built-in security. The ES Series is ideally suited to work as a self-contained network combining the functions of an access point, Ethernet switch, and security gateway in a form factor engineered specifically for harsh outdoor environments.

Fortress Security Controllers - The FC Series is the flagship of the Fortress product family, setting the standard for high performance, secure and reliable wireless LANs, satellite, free space optics and fixed wireless links. Available in 250, 500 or 1500Mbps configurations, the FC-X's Selectable Performance Module allows end-users to respond to growing bandwidth needs by simply selecting the appropriate performance for their network.

Fortress Secure Clients - The Fortress Secure Client enables devices to securely communicate with the network and peer to peer. When installed, the Fortress Secure Client creates a unique device identifier so that only authorized devices are allowed access to the network. This lightweight software agent supports the widest range of devices and operating systems.

Fortress Secure Client Bridge - The Fortress Secure Client Bridge secures devices that have no facility for wireless communication, or are not capable of running the Fortress Secure Client natively, such as printers, scales medical equipment, industrial machines, point-of-sale devices and more. This hardware client provides a flexible option for any device with standard Ethernet output.

Fortress Management and Policy Server - The Fortress Management and Policy Server (MaPS) provides centralized management for Security Gateways and Controllers. MaPS controls, configures and provides policy management for thousands of Fortress Security Gateways and Controllers across enterprise networks and remote facilities.

The Fortress product solution is represented by a global, diverse network of authorized distributors, value-added resellers and systems integrators.



Fortress Security Controller SPECIFICATIONS

FEATURES AND PERFORMANCE

- throughput
 - 250Mbps, 500Mbps, 1.5Gbps - upgradeable via Selectable Performance Module
- encryption
 - AES 128, 192, 256
- multi-factor authentication options
 - network, device, user, guest, 802.1x
- user authentication options
 - RADIUS, LDAP*, Active Directory*, RSA SecurID*, internal database* PKI/CAC
- traffic prioritization
 - 5 level Class of Service*
- manageability
 - SNMP or Fortress MaPS
- VLAN support
 - up to 4096 VLANs
- logging
 - exportable to Syslog*

**when used with Fortress Management and Policy Server (MaPS)*

HARDWARE

- form factor
 - 1U standard rack mount chassis
- dimensions
 - 1.75"H x 17.5"W x 12"D (4.44cm x 44.45cm x 30.48cm)
- weight
 - 11 lbs. (5 kg), approx.
- connections
 - two SFP transceiver receptacles (Encrypted and Unencrypted);
 - three RJ-45 10/100/1000 Mbps Auto-MDIX Ethernet ports (Encrypted, Unencrypted and Aux)
 - one RJ-45 serial port (Console)
- power supply
 - internal 100/240 VAC with a rear-panel inlet
- power switches
 - back-panel on/off power control;
 - front-panel, recessed, warm-power reset control
- system LEDs
 - four front-panel LEDs: Power, Status, Cleartext, Failover
 - three pairs integrated port LEDs
- system LCD
 - two-line, 20-character, backlit LCD text display
- system LCD keypad
 - four arrow keys for LCD menu navigation
- maximum AC draw
 - 40 Watts
- maximum heat dissipation
 - 136 BTU/hr
- cooling
 - 2 8000 RPM exhaust fans
- operating temperature
 - 32° F ~ 122° F (0° ~ 50° C)
- operating relative humidity (*non-condensing*)
 - 8% ~ 95%
- operating altitude
 - 0 ~ 16,404 feet (0 ~ 5,000 meters)
- storage temperature
 - -4° ~ 158° F (-20° ~ 70° C)
- safety
 - UL, CE markings per 60950-2
- emissions
 - FCC Class B, EN55022

www.fortresstech.com

Corporate Headquarters
Fortress Technologies Inc.
4023 Tampa Road, Suite 2000
Oldsmar, FL 34677
Phone: +1 813.288.7388

© 2006 Fortress Technologies Inc. All rights reserved.

